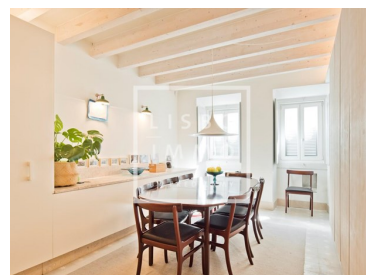




Estrela - Apartment



Bedrooms



Bathrooms



Area (m²)

1 299 000 €

(EUR €)

Ecological house, 242m2, 2 bedrooms, terrace, Estrela

House completely renovated in 2019, of 202 m2 with 40m2 of terrace, with an architectural project focused on ecology and renewable materials, while favoring modern comfort.

The preserved facade cannot reveal the extent of the changes made to the interior.

The owner's desire is to reconcile a feeling of well-being in a quality environment.

The improvements made, with the wooden flooring, the solar insulating double-glazed windows, the roof covering, the internal ventilation with the crawl space and the treatment of the walls, improve the thermal insulation and promote by 32% the energy saving for an equivalent house.

This translates into an A + energy rating, the best score, and very low operating expenses, promoting a positive impact on the environment.

Oriented East / West, this house benefits from a lot of natural light.



Frederick Lamy

+351 927 55 45 45 ² · +33 6 68 63 34 54

fred@lisboimmo.com

T +351 927 55 45 45 ² · T +33 6 68 63 34 54 · E fred@lisboimmo.com

Rua 1 de Maio #150 LISBOA 1300-476 PORTUGAL
AMI 16803

¹ (Call to national fixed network) | ² (Call to national mobile network)



The 2 terraces of 20m² each, located on the ground floor and on the first floor, allow you to enjoy this sunshine.

The interior surface of 202m², is spread over the 4 floors of approximately 55m² each, plus the 2 terraces.

On the ground floor, you access through the entrance hall, the living space, with the fully equipped kitchen, the dining room, the guest toilet, and the interior patio of 20m², plenty of interior storage and exterior. A very bright floor.

A wide wooden staircase gives you access to the first floor, the relaxation area, with the 2 living rooms, one of which has its fireplace, and the 20m² outdoor terrace.

The second floor distributes the master suite with a wooden dressing room which has been designed to divide the bedroom and the adjoining bathroom, with shower and Turkish bath.

The 3rd and last floor, accesses the second bedroom suite, with its bathroom with bathtub

The house has been completely designed around home automation, with video cameras, alarms, and complete management of the electrical and energy system.

Parking is easily done for residents in the street in front of the house, but it is possible to rent or buy one or more parking spaces nearby.

Located in one of the best residential areas of Lisbon, close to Jardim da Estrela and the Tagus River.

Ecological house, with solar panels and heat pump. The fireplace located on the first floor, distributes its heat in the rooms on the upper floors with a heat recovery system

All rooms benefit from reversible air conditioning and radiant floors.

Tax exemption both on acquisition (IMT) but also annual (IMI)

With a manufacturer's warranty until 2024,

We share with all real estate professionals at 50% / 50%.



Frederick Lamy

+351 927 55 45 45 ² · +33 6 68 63 34 54

fred@lisboimmo.com

T +351 927 55 45 45 ² · T +33 6 68 63 34 54 · E fred@lisboimmo.com

**Rua 1 de Maio #150 LISBOA 1300-476 PORTUGAL
AMI 16803**

¹ (Call to national fixed network) | ² (Call to national mobile network)



Property Features

- Heating
- Under floor heating
- Built-in closets
- Wooden floor
- Social bathroom
- Hammam
- Storage
- Built year: 2019
- Central location
- Terrace
- New Construction
- Floor: 3
- Air conditioning
- Fireplace
- Double glazed
- Suites: 2
- Equipped kitchen
- Garden
- Balcony
- Security alarm
- Energetic certification: A+
- Modern
- Renovated
- Partially furnished



Frederick Lamy

+351 927 55 45 45 ² · +33 6 68 63 34 54

fred@lisboimmo.com

T +351 927 55 45 45 ² · T +33 6 68 63 34 54 · E fred@lisboimmo.com

**Rua 1 de Maio #150 LISBOA 1300-476 PORTUGAL
AMI 16803**

¹ (Call to national fixed network) | ² (Call to national mobile network)