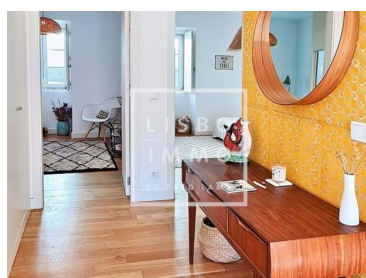
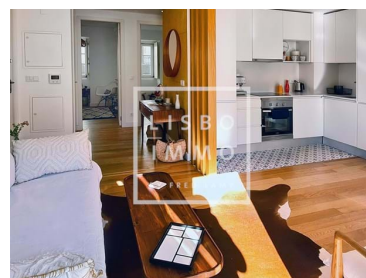




Estrela - Apartment



Bedrooms



Bathrooms



Area (m²)

479 000 €

(EUR €)

Apartment 2 Bedrooms, 63m, terrace, Estrela, lisbon

Situated in the heart of Lisbon's historic Lapa district, this apartment offers a perfect fusion of yesteryear elegance and contemporary luxury.

Just a few minutes' walk from the National Museum of Ancient Art and within walking distance of the tranquil Jardim da Estrela, every aspect of this property has been carefully designed to provide an exceptional living experience.

The recent renovation has brought a touch of modernity to this 63m2 space where all spaces are used, while the 4m2 terrace invites you to enjoy moments of calm and serenity in a verdant environment. The double-glazed windows ensure absolute tranquility while preserving the peaceful atmosphere of this historic district, while the floating wood flooring adds a touch of elegance and ease of maintenance.



Frederick Lamy

+351 927 55 45 45 ² · +33 6 68 63 34 54

fred@lisboimmo.com

T +351 927 55 45 45 ² · T +33 6 68 63 34 54 · E fred@lisboimmo.com

Rua 1 de Maio #150 LISBOA 1300-476 PORTUGAL
AMI 16803

¹ (Call to national fixed network) | ² (Call to national mobile network)



The bright and spacious interior, arranged in an open space, is ideal for relaxing with family or entertaining friends in a friendly atmosphere.

The modern kitchen, equipped with top-of-the-line appliances such as a hob, extractor fan, dishwasher and fridge, is a haven for up-and-coming food lovers.

Perched on the second floor of a charming fully renovated building, this apartment also benefits from the convenience of an elevator and air conditioning in all rooms, adding a touch of modernity to its historic charm.

With an annual condominium value as low as...euro. This property represents a rare opportunity in the Lisbon real estate market.

The Lapa neighbourhood is one of the traditional neighbourhoods of the Portuguese capital, particularly noble. It is in the heart of old Lisbon and is home to many of the most beautiful palaces, mansions and buildings.

You will be able to feel the power of old Lisbon, in this traditional neighborhood, chosen as the residence par excellence by the nobility and the high social class. It had its origins in 1770, when the municipality of Nossa Senhora da Lapa was created. This area covers an area of 0.74 km2 and is home to eight thousand inhabitants.

Lapa is one of the residential areas par excellence, but it also has a very active trade.

In this prime area of Lisbon are located most of the embassies of foreign countries in Portugal such as: Austria, Bulgaria, Canada, China, Finland, Indonesia, Ireland, Luxembourg, Order of Malta, Netherlands, United Kingdom, Romania, Sweden and Switzerland.

In Lapa, you can also visit the São Bento Palace (Assembly of the Republic, seat of the Portuguese Government) and the official residence of the Prime Minister of Portugal.

A neighborhood where life is good...

Property Features

- Heating
- Built-in closets
- Wooden floor
- Balcony
- Private condominium
- Central location
- Terrace
- New Construction
- Partially furnished
- Air conditioning
- Double glazed
- Equipped kitchen
- Built year: 2019
- Lift
- Energetic certification: B
- Modern
- Intermediate floors



Frederick Lamy

+351 927 55 45 45 ² · +33 6 68 63 34 54

fred@lisboimmo.com

T +351 927 55 45 45 ² · T +33 6 68 63 34 54 · E fred@lisboimmo.com

**Rua 1 de Maio #150 LISBOA 1300-476 PORTUGAL
AMI 16803**

¹ (Call to national fixed network) | ² (Call to national mobile network)